

6" M.J. PLUG TAPPED
WITH 2 1/2" I.D. THREADS

2 (3/4") TIE RODS
ANCHORED TO 90° BEND

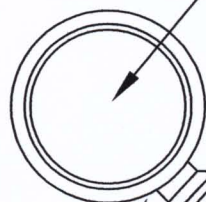
STD. FRAME
& COVER (SMALL)

STD. PRE-CAST
VALVE BOX

18"

SPACERS REQ'D ON
VALVE EXTENSION

24" AND ABOVE
WATER MAIN

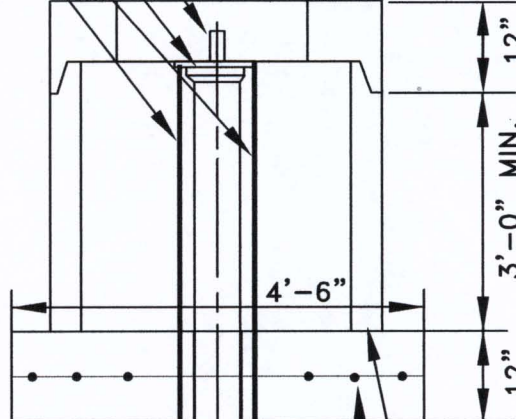


TEE

6" BLOW-OFF TO BE
PROVIDED WITH PLAIN END
OR MECHANICAL JOINT FLANGE

2-1/2" DIA. BRONZE NIPPLE 5" LONG WITH
STD. I.D. THREAD ONE END & HOSE THREAD
OTHER END. 2-1/2" BRONZE CAP WITH HOSE
THREAD TO BE DEPT. WATER SERVICES STD.

STANDARD MANHOLE FRAME
AND COVER SEE DETAIL ON
SEWER DETAIL SHEET



90° BEND

6" VALVE

4'-0" MIN.

CONC. BLOCKING

6"x 6"x 6 GA. WIRE MESH
PROVIDE 1 1/2" OPENING
BETWEEN PIPE &
CONCRETE AND CAULK

36" DIA. REINFORCED
CONCRETE PIPE OR
MANHOLE CONE SECTION

METRO WATER SERVICES

4" & 6" WATER BLOW-OFF
VALVE ASSEMBLY DETAIL

NOT TO SCALE | DATE: 02/22/08

DWG. NO. WDET017

METRO
WATER SERVICES

Hal Batthep
LICENSED DISTRIBUTION OPERATOR

SM
DIRECTOR OF WATER AND SEWERAGE SERVICES